

## LEVETTE DI CHIUSURA PINZA LEVERS FOR COLLET CLOSING

MACCHINA	Art.	S	L	H	Foro	Figura
AKEBONO MINC 26	2087	15	84	30	—	1
ATA 25	1465	15,5	103,5	26,7	—	2
ATA 40	1464	19,5	103,5	26,7	2,5	2
BECHET RM.7/10/12	0312	8	67,5	23	5	3
BECHLER A.7 - BR.10	0315	6	54,5	16	4	3
BECHLER BR.16 - 20	0314	12	76,2	28,6	6	4
BODEM P.26 - 32	0790	14,5	55	24	8	5
BODEM P.46B - P.52B	0794	14	70	20,7	2	1
BROWN & SHARPE 00	2296	12,5	61	15,5	—	2
BROWN & SHARPE 38	2039	22	103	23	—	2
B S A 25	0781	13,5	74	20	—	2
CAMPORESI T.25	0793	10	70	18	2	1
CAMPORESI T.42/60	2819	19,8	75	20	3	1
CASER TA.26/30	0796	9,5	70	18	2	1
CASER TA.45/50	0814	14	92	27	—	6
CERIOTTI RV.32	1153	8	60	24	7	7
CERIOTTI RVS.36	0817	10	74	22	6	8
CITIZEN G.16	2125	6	52	17,5	4	9
EMIMEC 26	0801	14,5	82	23,5	2,5	1
FEINLER FA.10/15	0850	7	50	19	6	9
GAUTIER GM.12	0311	6	57	15,5	4	3
GILDEMEISTER AS.16/20	2343	9	67,5	18,5	2,5	10
GILDEMEISTER AS.25	2339	20	65	21,8	—	11
GILDEMEISTER AS.28	2345	13	34	15,4	—	12
GILDEMEISTER AS.32	2382	24	73	24	—	13
GILDEMEISTER AS.32	2826	24	66	25	—	11
GILDEMEISTER AS.48	1249	30	74	25,7	—	11
GILDEMEISTER AS.48	2384	30	80	25,7	—	13
GIORGI GM.25/30/32	0817	10	74	22	6	8
HANWHA 26	2055	12	85	22	—	2
IMAMI IC.16 - R.28	0819	12	75	25	—	1
INDEX 12	0778	11,8	74	20	—	2
INDEX ON - OR - DG.12	0185	11,8	66	17,2	—	2
INDEX 18 - C.19 - 25 - ER.25	0781	13,5	74	20	—	2
INDEX 24 - C.29	0782	15,5	74	20	—	2
INDEX 24 - C.29 - B.30	0811	15,5	100	24,2	—	2
INDEX E.25 IDRAULICA	2178	13,8	66	17,2	—	2
INDEX KS.32 - 42 - 50	2179	20	88	23	—	14
INDEX 36/52/60 - B.42/60	0780	19,8	100	24,2	—	2
ITS 26	0798	10	71	18	2	1
ITS 26	0784	10	73	19,5	6	15
ITS 36 - 42 - 60	0975	17,5	88	28	8	16
IRALAG 25 - 35 - 45	2821	16	70	40	12	17
LOGOS L.18 - L.25	0781	13,5	74	17,2	—	2
LOGOS L.30	0811	15,5	100	24,2	—	2
LOGOS L.36 - 42 - 52	0806	18,4	100	23	—	2
LOGOS L.64	2004	21,3	100	24,2	—	2
MANURHIN PF - TR.22/25	0807	12	70,6	24	7	18
MANURHIN PF - TR.32/42	0808	15,5	91	32,5	10	18

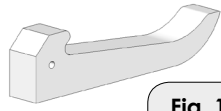


Fig. 1

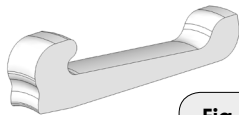


Fig. 2

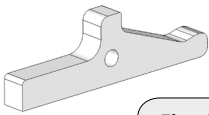


Fig. 3

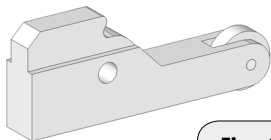


Fig. 4

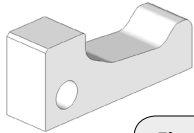


Fig. 5



Fig. 6



Fig. 7

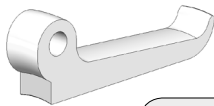


Fig. 8

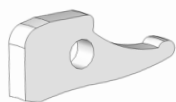


Fig. 9



Fig. 10

segue →

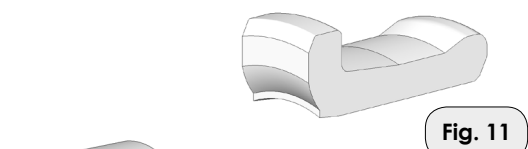


Fig. 11

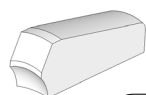


Fig. 12

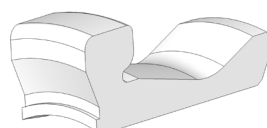


Fig. 13

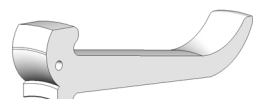


Fig. 14

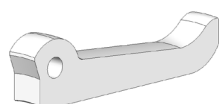


Fig. 15

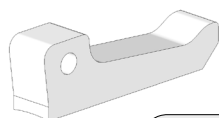


Fig. 16

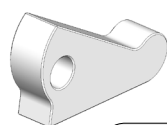


Fig. 17

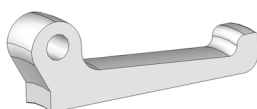


Fig. 18

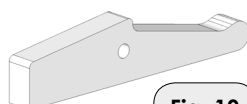


Fig. 19

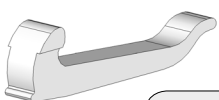


Fig. 20



Fig. 21

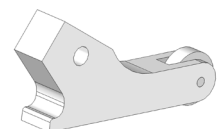


Fig. 22

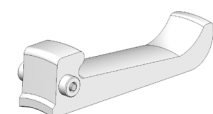


Fig. 23

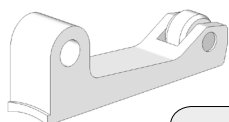


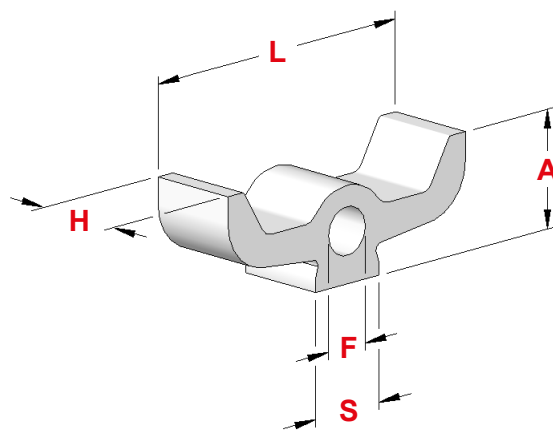
Fig. 24

MACCHINA	Art.	S	L	H	Foro	Figura
MUPEM TR.16/26	0974	12	74	18,3	2	14
MUPEM TR.32	2828	17	101	31	9	18
MUPEM TR.42	2708	20	112	34	10	18
PETERMANN P.7	0295	7	55	16,2	4	3
PETERMANN P.7R	0317	7	68	19	4	3
PETERMANN P.10 - 16 - 20	2759	10	99	22	5	19
RAVETTA 32	0786	12	81	21	2	1
RAVETTA 32	2052	20	81	21	—	1
SAIC DP.5/26	0785	10	53	28	8	7
SAIC B.26	0798	10	71	18	2	1
SAIC A.30/32	0797	14,5	73	24,5	6	18
SAIC B.30	0815	12	71	18	2	1
SAIC B.45	0801	14,5	82	23,5	2,5	1
SCHAUBLIN 102/120HP	2298	13,5/12	62,2	19	—	20
STAR NC.16	2183	10	73	27	6	3
STAR KNC.32B	2184	12	50	25,5	8	9
STEINHAUSER STF.16	1126	12	67,5	18,8	2,5	2
STEINHAUSER STF.25	2502	12	68	23	8	18
STEINHAUSER STF.36	2574	14	81	22,2	3	2
STROHM 45	0192	6	44	16	4,5	9
STROHM 75-105-125	0791	7	50	21	6	9
STROHM 75-105-125-NAR	1800	7	50	21	8	9
STROHM 205-255	0196	12	90,5	31	9	3
STROHM 205-255	0197	13,8	92	26	8	21
TAREX L.32 - 42 - 52	0811	15,5	100	24,2	—	2
TAREX L.42 - 52 - 64	2004	21,5	100	24,2	—	2
TAREX TH.64/90 C/RULLI	0110	25	76	37	10	22
TORNOS T.4	2706	6	43	16	4,5	3
TORNOS M.7	2311	6	45	22	4	9
TORNOS M.7	0182	7	58	18,3	5	3
TORNOS M.7	0194	7	58	18,3	6	3
TORNOS R.7 - R.10	0185	11,8	66	17,2	—	2
TORNOS NA.12	2390	9	55	21,3	6	3
TORNOS M.15	2697	9	71,3	24,3	7	3
TORNOS R.16	0781	13,5	74	20	—	2
TORNOS 20	2579	12	91	30	8	3
TORNOS RR.20	2582	13,5	82	21	2	1
TORNOS M.28/30/32	0669	14	108,5	28	9	3
TRAUB A.15	0795	9	62	17	—	1
TRAUB A.15/20/25	0793	10	70	18	2	1
TRAUB TC.15 - A.15/25	0776	12	70	18	2	1
TRAUB TD.16/26/36	0974	12	74	18,3	2	14
TRAUB A.26/36/42/45/60	0794	14	70	20,7	2	1
TRAUB TB.30/42/60 - TK.42	0792	18	84	22	—	23
TSUGAMI S.20/BS.20/NP.20	2053	12	57	17	—	2
TSUGAMI S.20/BS.20/BE	2054	8	56	13	—	2
TSUGAMI NP.20	2055	12	85	22	—	2
TSUGAMI BS 32	2055	12	85	22	—	2
UNAMUNO 15	0850	7	50	19	6	9
UNAMUNO 25	0782	15,5	74	20	—	2
WICKMAN 1"	2391	18,25	77	26,1	11,11	24
WICKMAN 1" 3/8	2478	22	101,5	37,5	11,11	24
WICKMAN 1" 3/8 - 1" 3/4	2479	27,8	100	35,7	14,28	24
WICKMAN 2" 1/4	0942	25	106	38	14,28	24
WICKMAN 2" 1/4	2400	25	122	37,5	14,28	18
WIRTH & GRUFFAT TCN.12	0492	7	67,8	16,5	4	3
YATOR 42	0650	15,5	98	30	3	2

## LEVETTE PER FRIZIONE CLUTCH LEVERS

### LEVETTE PER FRIZIONE CLUTCH LEVERS

MACCHINA	Art.	A	F	H	L	S
ATA 40	<b>0268</b>	21	8	20,0	50,0	14
INDEX 12-18-25-C19	<b>0291</b>	17	7	13,8	45,0	12
INDEX 24-E26-ER26	<b>2721</b>	20	8	15,8	50,0	14
INDEX C 29	<b>0563</b>	17	7	15,8	45,0	12
INDEX B30	<b>2724</b>	18	8	15,8	50,0	14
INDEX 36-52	<b>2744</b>	20	8	19,8	50,0	14
INDEX B42-60	<b>2746</b>	22	8	19,8	46,0	14



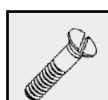
### LEVETTE PER FRIZIONE CAMBIO VELOCITA' LEVERS FOR SPEED CHANGE CLUTCH

MACCHINA	Art.	A	F	H	L	S
CAMBIO INDEX B30	<b>2746</b>	22	8	19,8	46,0	14
CAMBIO INDEX B42-60	<b>2744</b>	20	8	19,8	50,0	14

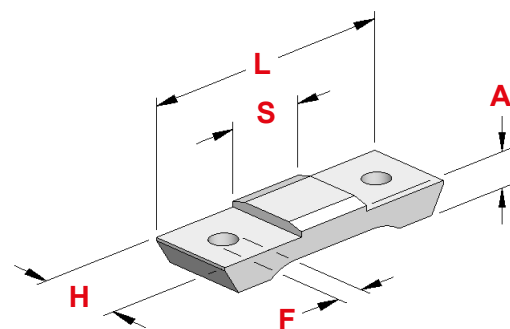
## PIASTRINE PER FRIZIONE CLUTCH PADS

### PIASTRINE PER FRIZIONE CLUTCH PADS

MACCHINA	Art.	A	F	H	L	S	Vite Art.
INDEX 12-18-25-C19	<b>0269</b>	6	5 x 0,5	14	40,0	12	2215
INDEX 24-E26-ER26	<b>2705</b>	8	5 x 0,5	16	45,5	16	2220
INDEX C 29	<b>0564</b>	6	5 x 0,5	16	39,5	12	2215
INDEX B30	<b>2705</b>	8	5 x 0,5	16	45,5	16	2220
INDEX 36-52	<b>2745</b>	8	5 x 0,5	20	45,5	16	2220
INDEX B42-60	<b>2747</b>	7	5 x 0,5	20	40,2	10	2281

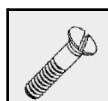


Vite  
Art.



### PIASTRINE PER FRIZIONE CAMBIO VELOCITA' PADS FOR SPEED CHANGE CLUTCH

MACCHINA	Art.	A	F	H	L	S	Vite Art.
CAMBIO INDEX B30	<b>2747</b>	7	5 x 0,5	20	40,2	10	2281
CAMBIO INDEX B42-60	<b>2745</b>	8	5 x 0,5	20	45,5	16	2220



Vite  
Art.